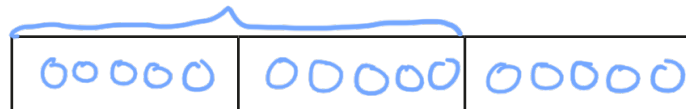


Fractions of a set of objects (2)

1 Draw counters in the bar models to help you complete each number sentence.

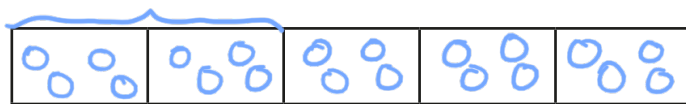
a) $\frac{2}{3}$ of 15 = 10



b) $\frac{3}{4}$ of 8 = 6



c) $\frac{2}{5}$ of 20 = 8



2 Match the questions and answers.

$\frac{2}{3}$ of 9 = ?	9
$\frac{3}{5}$ of 15 = ?	6
$\frac{5}{6}$ of 12 = ?	15
$\frac{3}{4}$ of 20 = ?	10

(Hand-drawn blue lines connect the questions to the correct answers: 2/3 of 9 to 6, 3/5 of 15 to 9, 5/6 of 12 to 10, and 3/4 of 20 to 15.)

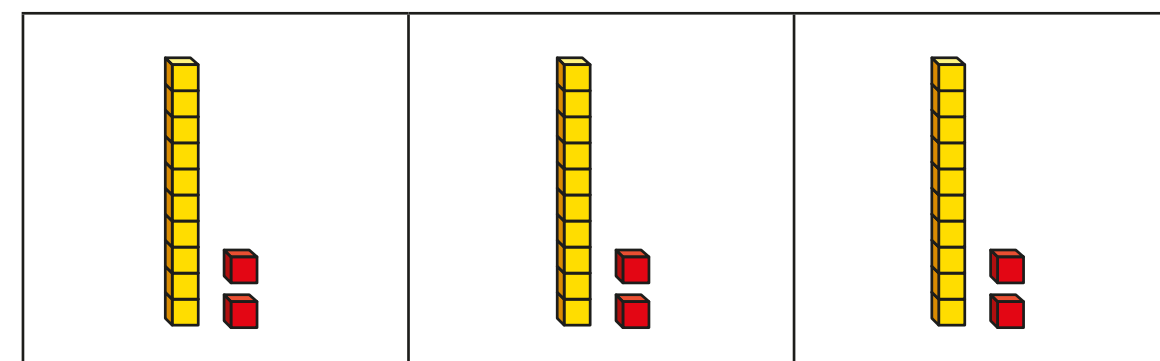
3 What is $\frac{6}{6}$ of 18?

How do you know?

18



4 Brett uses a bar model and base 10 to find $\frac{2}{3}$ of 36



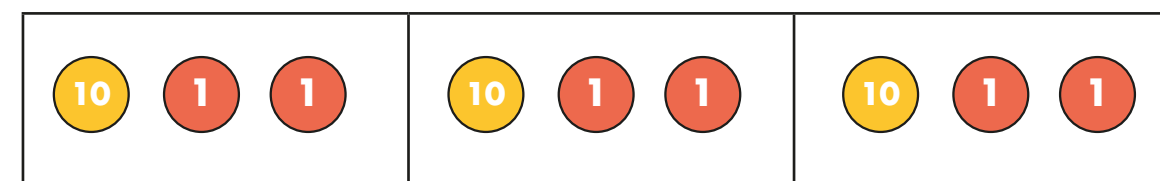
Use Brett's method to complete the number sentences.

a) $\frac{2}{3}$ of 63 = 42

b) $\frac{3}{4}$ of 48 = 36

c) $\frac{3}{4}$ of 92 = 69

5 Kim uses a bar model and place value counters to find $\frac{2}{3}$ of 36

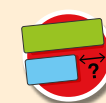
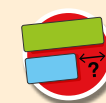


Use Kim's method to complete the number sentences.

a) $\frac{2}{3}$ of 96 = 64

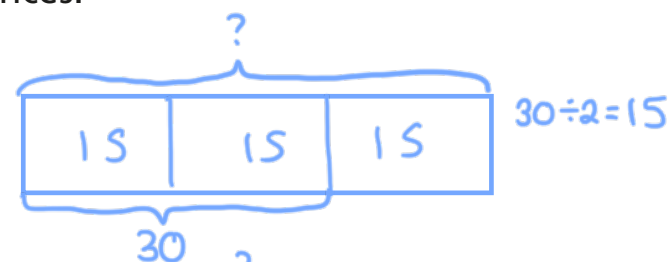
b) $\frac{3}{5}$ of 60 = 36

c) $\frac{3}{4}$ of 52 = 39

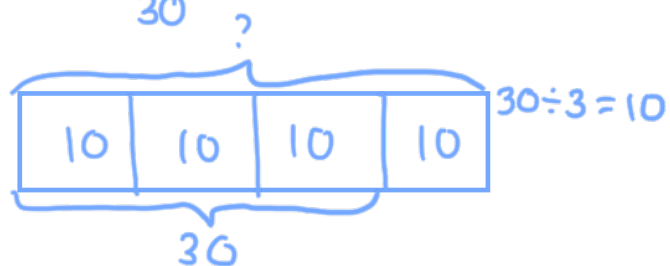


6 Complete the number sentences.

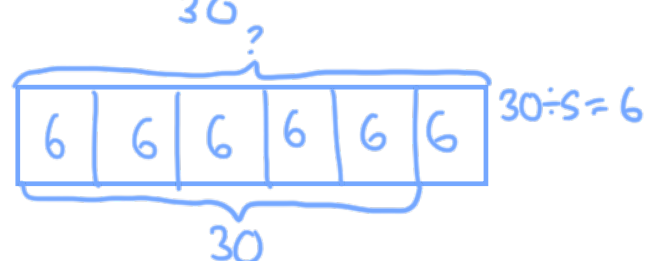
a) $\frac{2}{3}$ of $\boxed{45} = 30$



b) $\frac{3}{4}$ of $\boxed{40} = 30$



c) $\frac{5}{6}$ of $\boxed{36} = 30$



7



Tommy

To find $\frac{3}{4}$ of 12,
you divide by 4 and then
multiply the answer by 3

To find $\frac{3}{4}$ of 12,
you divide by 3 and then
multiply the answer by 4

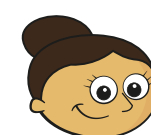


Dexter

Who is correct? Tommy

How do you know? Show your working.

8 Dora, Whitney and Ron each find a fraction of 24 using counters.



Dora

I have $\frac{5}{6}$ of 24

I have $\frac{2}{3}$ of 24



Whitney



Ron

I have 18 counters.

a) Who has the most counters? Show your workings.

$$\frac{5}{6} \text{ of } 24 = 20 \quad \frac{2}{3} \text{ of } 24 = 16$$

Dora

b) How many more counters does Dora have than Whitney?

$$20 - 16 = 4$$

4

9 Write fractions to make the statements correct.

e.g.
 $\frac{1}{6}$ of 36 < 18

$\frac{1}{2}$ of 36 = 18

$\frac{3}{4}$ of 36 > 18

How many different answers can you find for each?
Compare with a partner.